
**User's
Manual**

**AQ1300/AQ1301 ETHERNET
Control Window**

Thank you for purchasing the AQ1300/AQ1301 1G/10G ETHERNET Multi Field Tester. This user's manual explains the features, operating procedures, and handling precautions of the AQ1300/AQ1301 Remote Control Software. To ensure correct use, please read this manual thoroughly before beginning operation. Keep this manual in a safe place for quick reference in the event that a question arises.

This manual is one of five AQ1300/AQ1301 manuals. Please read all manuals.

Manual Title	Manual No.	Description
AQ1300/AQ1301 ETHERNET Multi Field Tester Operation Guide	IM AQ1300-02EN	This guide focuses on the handling precautions, basic operations, and specifications of the AQ1300/AQ1301.
AQ1300/AQ1301 ETHERNET Multi Field Tester User's Manual (included in CD)	IM AQ1300-01EN	This manual explains all the AQ1300/AQ1301 features and how to use them.
AQ1300/AQ1301 ETHERNET Multi Field Tester Communication Interface User's Manual (included in CD)	IM AQ1300-17EN	The manual explains the AQ1300/AQ1301 communication interface features and instructions on how to use them.
AQ1300 MFT 10GbE Setup Software User's Manual (included in CD)	IM AQ1300-61EN	This manual explains how to use a PC to create AQ1300/AQ1301 setup files, display result files, and generate CSV files.
AQ1300/AQ1301 ETHERNET Remote Control Software User's Manual (included in CD)	IM AQ1300-63EN	This manual. It explains how to use a PC to control the AQ1300/AQ1301 and execute various tests.

The "-EN" in the manual number is the language code.

Contact information of Yokogawa offices worldwide is provided on the following sheet.

Document No.	Description
PIM 113-01Z2	List of worldwide contacts

Notes

- This manual (IM AQ1300-63EN 2nd Edition) applies to AQ1300/AQ1301b ETHERNET Remote Control Software version R1.09.01.001 and later.
If you are using an older version, you will not be able to use all the features described in this manual.
Check the software version of your product with the version information. For information on how to view the version information, see section 5.3.
- The contents of this manual are subject to change without prior notice as a result of continuing improvements to the software's performance and functionality. The figures given in this manual may differ from those that actually appear on your screen.
- Every effort has been made in the preparation of this manual to ensure the accuracy of its contents. However, should you have any questions or find any errors, please contact your nearest YOKOGAWA dealer.
- Copying or reproducing all or any part of the contents of this manual without the permission of YOKOGAWA is strictly prohibited.

Trademarks

- Microsoft, Windows, Windows XP, and Windows Vista are either registered trademarks or trademarks of Microsoft Corporation in the United States and/or other countries.
- Adobe, Acrobat, and PostScript are either registered trademarks or trademarks of Adobe Systems Incorporated.
- In this manual, the ® and TM symbols do not accompany their respective registered trademark or trademark names.
- Other company and product names are trademarks or registered trademarks of their respective companies.

Revisions

- June 2014 1st Edition
- September 2015 2nd Edition
- October 2017 3rd Edition

Terms and Conditions of the Software License

Yokogawa Test & Measurement Corporation, a Japanese corporation (hereinafter called "Yokogawa"), grants permission to use this Yokogawa Software Program (hereinafter called the "Licensed Software") to the Licensee on the conditions that the Licensee agrees to the terms and conditions stipulated in Article 1 hereof. You, as the Licensee (hereinafter called "Licensee"), shall agree to the following terms and conditions for the software license (hereinafter called the "Agreement") based on the use intended for the Licensed Software.

Please note that Yokogawa grants the Licensee permission to use the Licensed Software under the terms and conditions herein and in no event shall Yokogawa intend to sell or transfer the Licensed Software to the Licensee.

Licensed Software Name: AQ1300 Remote Control Software
Number of License: 1

Article 1 (Scope Covered by these Terms and Conditions)

- 1.1 The terms and conditions stipulated herein shall be applied to any Licensee who purchases the Licensed Software on the condition that the Licensee consents to agree to the terms and conditions stipulated herein.
- 1.2 The "Licensed Software" herein shall mean and include all applicable programs and documentation, without limitation, all proprietary technology, algorithms, and know-how such as a factor, invariant or process contained therein.

Article 2 (Grant of License)

- 2.1 Yokogawa grants the Licensee, for the purpose of single use, non-exclusive and non-transferable license of the Licensed Software with the license fee separately agreed upon by both parties.
- 2.2 The Licensee is, unless otherwise agreed in writing by Yokogawa, not entitled to copy, change, sell, distribute, transfer, or sublicense the Licensed Software.
- 2.3 The Licensed Software shall not be copied in whole or in part except for keeping one (1) copy for back-up purposes. The Licensee shall secure or supervise the copy of the Licensed Software by the Licensee itself with great, strict, and due care.
- 2.4 In no event shall the Licensee dump, reverse assemble, reverse compile, or reverse engineer the Licensed Software so that the Licensee may translate the Licensed Software into other programs or change it into a man-readable form from the source code of the Licensed Software. Unless otherwise separately agreed by Yokogawa, Yokogawa shall not provide the Licensee the source code for the Licensed Software.
- 2.5 The Licensed Software and its related documentation shall be the proprietary property or trade secret of Yokogawa or a third party which grants Yokogawa the rights. In no event shall the Licensee be transferred, leased, sublicensed, or assigned any rights relating to the Licensed Software.
- 2.6 Yokogawa may use or add copy protection in or onto the Licensed Software. In no event shall the Licensee remove or attempt to remove such copy protection.
- 2.7 The Licensed Software may include a software program licensed for re-use by a third party (hereinafter called "Third Party Software", which may include any software program from affiliates of Yokogawa made or coded by themselves.) In the case that Yokogawa is granted permission to sublicense to third parties by any licensors (sub-licensor) of the Third Party Software pursuant to different terms and conditions than those stipulated in this Agreement, the Licensee shall observe such terms and conditions of which Yokogawa notifies the Licensee in writing separately.
- 2.8 In no event shall the Licensee modify, remove or delete a copyright notice of Yokogawa and its licensor contained in the Licensed Software, including any copy thereof.

Article 3 (Restriction of Specific Use)

- 3.1 The Licensed Software shall not be intended specifically to be designed, developed, constructed, manufactured, distributed or maintained for the purpose of the following events:
 - a) Operation of any aviation, vessel, or support of those operations from the ground;
 - b) Operation of nuclear products and/or facilities;
 - c) Operation of nuclear weapons and/or chemical weapons and/or biological weapons; or
 - d) Operation of medical instrumentation directly utilized for humankind or the human body.
- 3.2 Even if the Licensee uses the Licensed Software for the purposes in the preceding Paragraph 3.1, Yokogawa has no liability to or responsibility for any demand or damage arising out of the use or operations of the Licensed Software, and the Licensee agrees, on its own responsibility, to solve and settle the claims and damages and to defend, indemnify or hold Yokogawa totally harmless, from or against any liabilities, losses, damages and expenses (including fees for recalling the Products and reasonable attorney's fees and court costs), or claims arising out of and related to the above-said claims and damages.

Article 4 (Warranty)

- 4.1 The Licensee shall agree that the Licensed Software shall be provided to the Licensee on an "as is" basis when delivered. If defect(s), such as damage to the medium of the Licensed Software, attributable to Yokogawa is found, Yokogawa agrees to replace, free of charge, any Licensed Software on condition that the defective Licensed Software shall be returned to Yokogawa's specified authorized service facility within seven (7) days after opening the Package at the Licensee's expense. As the Licensed Software is provided to the Licensee on an "as is" basis when delivered, in no event shall Yokogawa warrant that any information on or in the Licensed Software, including without limitation, data on computer programs and program listings, be completely accurate, correct, reliable, or the most updated.
- 4.2 Notwithstanding the preceding Paragraph 4.1, when third party software is included in the Licensed Software, the warranty period and terms and conditions that apply shall be those established by the provider of the third party software.
- 4.3 When Yokogawa decides in its own judgement that it is necessary, Yokogawa may from time to time provide the Licensee with Revision upgrades and Version upgrades separately specified by Yokogawa (hereinafter called "Updates").
- 4.4 Notwithstanding the preceding Paragraph 4.3, in no event shall Yokogawa provide Updates where the Licensee or any third party conducted renovation or improvement of the Licensed Software.
- 4.5 THE FOREGOING WARRANTIES ARE EXCLUSIVE AND IN LIEU OF ALL OTHER WARRANTIES OF QUALITY AND PERFORMANCE, WRITTEN, ORAL, OR IMPLIED, AND ALL OTHER WARRANTIES INCLUDING ANY IMPLIED WARRANTIES OF MERCHANTABILITY OR FITNESS FOR A PARTICULAR PURPOSE ARE HEREBY DISCLAIMED BY YOKOGAWA AND ALL THIRD PARTIES LICENSING THIRD PARTY SOFTWARE TO YOKOGAWA.
- 4.6 Correction of nonconformity in the manner and for the period of time provided above shall be the Licensee's sole and exclusive remedy for any failure of Yokogawa to comply with its obligations and shall constitute fulfillment of all liabilities of Yokogawa and any third party licensing the Third Party Software to Yokogawa (including any liability for direct, indirect, special, incidental or consequential damages) whether in warranty, contract, tort (including negligence but excluding willful conduct or gross negligence by Yokogawa) or otherwise with respect to or arising out of the use of the Licensed Software.

Article 5 (Infringement)

- 5.1 If and when any third party should demand injunction, initiate a law suit, or demand compensation for damages against the Licensee under patent right (including utility model right, design patent, and trade mark), copy right, and any other rights relating to any of the Licensed Software, the Licensee shall notify Yokogawa in writing to that effect without delay.
- 5.2 In the case of the preceding Paragraph 5.1, the Licensee shall assign to Yokogawa all of the rights to defend the Licensee and to negotiate with the claiming party. Furthermore, the Licensee shall provide Yokogawa with necessary information or any other assistance for Yokogawa's defense and negotiation. If and when such a claim should be attributable to Yokogawa, subject to the written notice to Yokogawa stated in the preceding Paragraph 5.1, Yokogawa shall defend the Licensee and negotiate with the claiming party at Yokogawa's cost and expense and be responsible for the final settlement or judgment granted to the claiming party in the preceding Paragraph 5.1.
- 5.3 When any assertion or allegation of the infringement of the third party's rights defined in Paragraph 5.1 is made, or when at Yokogawa's judgment there is possibility of such assertion or allegation, Yokogawa will, at its own discretion, take any of the following countermeasures at Yokogawa's cost and expense.
 - a) To acquire the necessary right from a third party which has lawful ownership of the right so that the Licensee will be able to continue to use the Licensed Software;
 - b) To replace the Licensed Software with an alternative one which avoids the infringement; or
 - c) To remodel the Licensed Software so that the Licensed Software can avoid the infringement of such third party's right.
- 5.4 If and when Yokogawa fails to take either of the countermeasures as set forth in the preceding subparagraphs of Paragraph 5.3, Yokogawa shall indemnify the Licensee only by paying back the price amount of the Licensed Software which Yokogawa has received from the Licensee. THE FOREGOING PARAGRAPHS STATE THE ENTIRE LIABILITY OF YOKOGAWA AND ANY THIRD PARTY LICENSING THIRD PARTY SOFTWARE TO YOKOGAWA WITH RESPECT TO INFRINGEMENT OF THE INTELLECTUAL PROPERTY RIGHTS INCLUDING BUT NOT LIMITED TO, PATENT AND COPYRIGHT.

Article 6 (Liabilities)

6.1 If and when the Licensee should incur any damage relating to or arising out of the Licensed Software or service that Yokogawa has provided to the Licensee under the conditions herein due to a reason attributable to Yokogawa, Yokogawa shall take actions in accordance with this Agreement. However, in no event shall Yokogawa be liable or responsible for any special, incidental, consequential and/or indirect damage, whether in contract, warranty, tort, negligence, strict liability, or otherwise, including, without limitation, loss of operational profit or revenue, loss of use of the Licensed Software, or any associated products or equipment, cost of capital, loss or cost of interruption of the Licensee's business, substitute equipment, facilities or services, downtime costs, delays, and loss of business information, or claims of customers of Licensee or other third parties for such or other damages. Even if Yokogawa is liable or responsible for the damages attributable to Yokogawa and to the extent of this Article 6, Yokogawa's liability for the Licensee's damage shall not exceed the price amount of the Licensed Software or service fee which Yokogawa has received. Please note that Yokogawa shall be released or discharged from part or all of the liability under this Agreement if the Licensee modifies, remodels, combines with other software or products, or causes any deviation from the basic specifications or functional specifications, without Yokogawa's prior written consent.

6.2 All causes of action against Yokogawa arising out of or relating to this Agreement or the performance or breach hereof shall expire unless Yokogawa is notified of the claim within one (1) year of its occurrence.

6.3 In no event, regardless of cause, shall Yokogawa assume responsibility for or be liable for penalties or penalty clauses in any contracts between the Licensee and its customers.

Article 7 (Limit of Export)

Unless otherwise agreed by Yokogawa, the Licensee shall not directly or indirectly export or transfer the Licensed Software to any countries other than those where Yokogawa permits export in advance.

Article 8 (Term)

This Agreement shall become effective on the date when the Licensee receives the Licensed Software and continues in effect unless or until terminated as provided herein, or the Licensee ceases using the Licensed Software by itself or with Yokogawa's thirty (30) days prior written notice to the Licensee.

Article 9 (Injunction for Use)

During the term of this Agreement, Yokogawa may, at its own discretion, demand injunction against the Licensee in case that Yokogawa deems that the Licensed Software is used improperly or under severer environments other than those where Yokogawa has first approved, or any other condition which Yokogawa may not permit.

Article 10 (Termination)

Yokogawa, at its sole discretion, may terminate this Agreement without any notice or reminder to the Licensee if the Licensee violates or fails to perform this Agreement. However, Articles 5, 6, and 11 shall survive even after the termination.

Article 11 (Jurisdiction)

Any dispute, controversies, or differences between the parties hereto as to interpretation or execution of this Agreement shall be resolved amicably through negotiation between the parties upon the basis of mutual trust. Should the parties fail to agree within ninety (90) days after notice from one of the parties to the other, both parties hereby irrevocably submit to the exclusive jurisdiction of the Tokyo District Court (main office) in Japan for settlement of the dispute.

Article 12 (Governing Law)

This Agreement shall be governed by and construed in accordance with the laws of Japan. The Licensee expressly agrees to waive absolutely and irrevocably and to the fullest extent permissible under applicable law any rights against the laws of Japan which it may have pursuant to the Licensee's local law.

Article 13 (Severability)

In the event that any provision hereof is declared or found to be illegal by any court or tribunal of competent jurisdiction, such provision shall be null and void with respect to the jurisdiction of that court or tribunal and all the remaining provisions hereof shall remain in full force and effect.

Conventions Used in This Manual

Notes

The notes and cautions in this manual are categorized using the following symbols.

Note Calls attention to information that is important for the proper operation of the instrument.

Symbols and Conventions Used in Procedural Explanations

The contents of the procedural explanations are indicated using the following symbols.

Procedure Carry out the procedure according to the step numbers. All procedures are written under the assumption that you are starting operation at the beginning of the procedure, so you may not need to carry out all the steps in a procedure when you are changing the settings.

Explanation This section describes the setup items and the limitations regarding the procedures.

Character Notations

Bold formatting indicates menus, buttons, etc. that the procedure requires you to click or interface terms.

Notes about Using This Software

Storing the CD

Keep the original CD for this software in a safe place. To use this software, install it on a PC hard disk, and run it from the PC.

Notes on Using the Software

The software may stop functioning when the PC is in standby mode. Disable standby mode when you use this software.

About This Manual

This manual covers the following topics related to the Remote Control Software.

Chapter 1 explains test configuration, system requirements, software features and screens, and how to start and close the software.

Chapter 2 explains how to connect the software to the AQ1300/AQ1301.

Chapter 3 explains how to use the settings required to perform tests.

Chapter 4 explains how to execute each test and how to save data.

This manual does not explain the details of settings and test items. For details on these items, see the user's manual, IM AQ1300-01EN.

Contents

Conventions Used in This Manual	iv
Notes about Using This Software	iv
Chapter 1 Features and Starting and Exiting the Software	
1.1 Overview	1-1
1.2 Specifications	1-3
1.3 Screen Explanation	1-5
1.4 Starting and Closing the Software	1-6
Chapter 2 Connection Method	
2.1 Connecting over a Network	2-1
2.2 Connecting Using the USB	2-3
Chapter 3 Setup Procedure	
3.1 Configuring a Traffic Test	3-1
3.2 Configuring a Loopback Test	3-6
3.3 Configuring a QoS Test	3-8
3.4 Configuring a PING Test	3-12
3.5 Configuring a BERT Test	3-14
3.6 Saving Setup Data	3-18
3.7 Copying Settings	3-19
3.8 Creating Setup Data without Connecting to an AQ1300/AQ1301	3-20
3.9 Initializing Settings	3-21
3.10 Configuring the Window	3-22
3.11 Setting the Statistics to Be Displayed	3-23
Chapter 4 Executing Tests	
4.1 Executing a Test	4-1
4.2 Inserting Errors, Controlling L1, and Changing the Tx Rate	4-2
4.3 Displaying the AQ1300/AQ1301 Status	4-3
4.4 Capturing a Statistical Log	4-4
4.5 Saving Test Data	4-5

1

2

3

4

5

1.1 Overview

What the Remote Control Software Can Do

You can use this software to change the settings and control the starting and stopping of tests on up to two AQ1300/AQ1301s and display on the PC the statistical results of various test data.

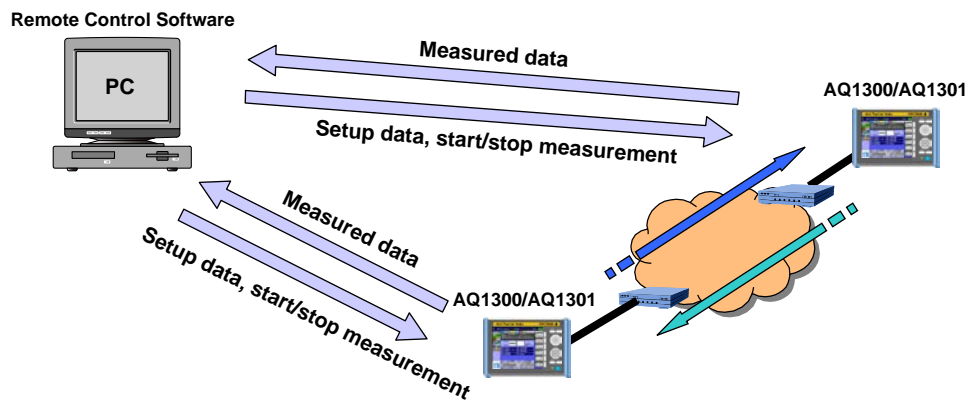
You can control a pair of AQ1300/AQ1301s from a single PC.

Test Items

You can set the parameters related to the following test items and execute tests.

- Traffic test
- Loopback test
- QoS test
- PING test
- BERT

You can also save settings and statistical data to files.



For details on test items and settings, see the user's manual, IM AQ1300-01EN.

System Requirements

PC

CPU: 1 GHz or higher
Memory: 256 MB or more
HDD: 500 MB free space or more
CD drive (required when installing the software)

Display:

XGA (1024×768 pixels) or higher

Operating System

Windows XP, Windows Vista, Windows 7, Windows 8

Communication Ports

- **Ethernet**
An Ethernet port that supports 10BASE-T or 100BASE-TX
- **USB**
A USB port that supports USB Revision 1.1 or higher

1.2 Specifications

Environment	
OS	Windows XP, Windows 7 (Windows Vista), Windows 8
Hardware	Display: XGA (1024×768 pixels) or higher Communication port: Ethernet or USB 1.1
Communication protocol	TCP Port No: 10001
Maximum number of units that can be controlled simultaneously	2
Measurement function	
Test type	Traffic/Bert/QoS/Ping/Loopback
Control items	Test type selection Measurement start/stop Transmission start/stop Error insertion: CRC error, symbol error, sequence error, payload error Tx rate adjustment LF/RF transmission Other device search: In the same segment, up to 64 devices
Setup items	Common settings Test interface: XFP, SFP(1G), SFP(FE), RJ-45 Test layer: L2, L3-IPv4, L3-IPv6 Jumbo frame on/off, UDP on/off Link settings Negotiation, advertisement, speed, duplex, flow control, MDI, automatic RF response, linkdown transmission continuation, Tx clock source Address settings Source Source MAC, source IPv4/IPv6, VLAN VLAN stacks VLAN1/2 TPID, CFI, CoS, ID Destination Destination MAC, destination IPv4/IPv6 Emulation settings ARP reply, PING reply, NDP reply, PING v6 reply Traffic test settings Tx rate settings Unit (Utilization[%]/bit/fps) Burst setting Tx frame format setting: Auto or manual using Frame Builder Tx mode: Continuous transmission, transmission time specification, frames specifications Tx frame length adjustment Field adjustment Fill pattern: Random, all zeros, all ones, alternating zeros and ones Rx settings Oversize threshold Rx frame filter

1.2 Specifications

	<p>BERT test settings</p> <p>Tx rate settings</p> <p>Unit (Utilization[%]/bit/fps)</p> <p>Burst setting</p> <p>Tx mode: Continuous transmission, transmission time specification, frames specifications</p> <p>Tx frame length adjustment</p> <p>Rx settings</p> <p>Timeout period for sync loss</p> <p>Oversize threshold</p> <p>Rx frame filter</p>
	<p>QoS test settings</p> <p>QoS identification: Tx frame ID, field specification, offset specification</p> <p>Ch(n)</p> <p>Channel enable/disable, QoS value, frame length, Tx rate: Utilization [%]</p> <p>Tx frame format setting: Auto or manual using Frame Builder</p> <p>Fill pattern: Random, all zeros, all ones, alternating zeros and ones</p> <p>Tx mode: Continuous transmission, transmission time specification, frames specifications</p> <p>Rx QoS</p> <p>Allocation method specification</p> <p>Allocation patterns × 2 fields</p> <p>Rx settings</p> <p>Oversize threshold</p> <p>Rx frame filter</p>
	<p>Loopback test settings</p> <p>Loopback test target</p>
	<p>PING test settings</p> <p>Tx interval</p> <p>Tx mode</p> <p>Tx frame length</p>
Statistical items	<p>Statistical item display settings: Select the displayed items and their positions</p> <p>Statistical items</p> <p>Common: Acquisition time and measurement duration</p> <p>Link: Laser off count, linkdown count</p> <p>Tx, Rx, delay, sequence, payload, Tx channels (n), Rx channels (n), BERT, PING</p>
Options	<p>Advanced settings</p> <p>Synchronize measurement and transmission controls</p> <p>Remove test tag from test frame</p> <p>Measurement settings</p> <p>Operation at measurement start</p> <p>Request ARP/NDP</p> <p>Not start the measurement when Link is down.</p> <p>Measurement STOP condition</p> <p>Stop measurement when linkdown is detected, L2 error is detected, or L3 error is detected</p> <p>Operation after measurement stops</p> <p>Save measurement results and statistics log (in the AQ1300/AQ1301) to files</p> <p>Synchronization control setting</p> <p>Try synchronizing with the other device</p> <p>Other settings</p> <p>Subtract the delay time specific to the other device from the measurement results</p>
File	<p>Setup file: Uses a dedicated setup file</p> <p>Export setup files for manual mode and auto mode</p> <p>Result file: Save in CSV format (*.csv)</p>

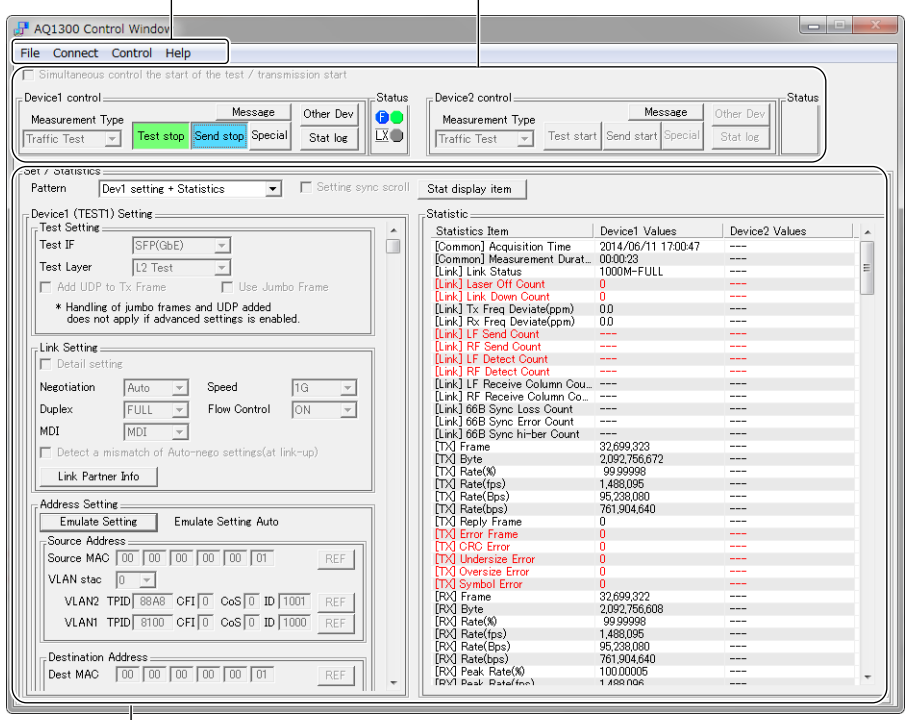
1.3 Screen Explanation

The software screen contains a menu bar, control menu, setting menu, and a list of statistics.

Control menu

Test item setting, test start, send start, statistical log setting, special control setting, AQ1300/AQ1301 message display, other device information display, AQ1300/AQ1301 status display

Menu bar



Setting menu and a list of statistics

If you are connected to two AQ1300/AQ1301s, you can display the setting menu of the second unit in place of the list of statistics. The setting menu displays the auto test settings. To specify the settings in detail, press the appropriate setting buttons to display the corresponding setting windows.

1.4 Starting and Closing the Software

This section explains how to start and close the Control Software.

Starting the Software

1. Click Start, **All Programs**, **yokogawa**, **AQ1300CtrlWnd**, and then click **AQ1300CtrlWnd.exe**.

The Control Software starts.

Closing the Software

1. On the **File** menu, click **Exit Application**.

2.1 Connecting over a Network

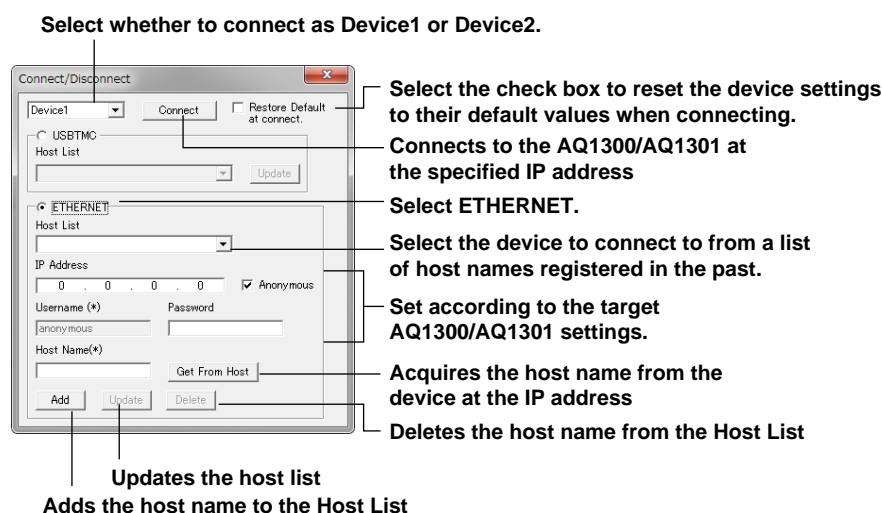
This section explains how to connect the AQ1300/AQ1301 to a PC over an Ethernet network.

Configuring the AQ1300/AQ1301

1. Connect the AQ1300/AQ1301 to the network.
2. In the AQ1300/AQ1301 network settings, set the network parameters.
For the procedure, see “Configuring Network Settings” in the AQ1300/AQ1301 User’s Manual.
3. Restart the AQ1300/AQ1301.
4. Press **MENU** on the panel to display the top menu.

Configuring the Remote Control Software

1. Click Start, **All Programs**, **yokogawa**, **AQ1300CtrlWnd**, and then click **AQ1300CtrlWnd.exe**.
The Control Software starts.
2. On the **Connect** menu, click **Connect**.
The connection dialog box appears.



3. Of the two AQ1300/AQ1301s that can be connected, select which device, Device1 or Device2, to connect as.
4. Select **ETHERNET**.
5. If the AQ1300/AQ1301 that you want to connect to does not appear in the host list, set the **IP Address**, **Username**, and **Password** of the appropriate AQ1300/AQ1301.
To connect to the AQ1300/AQ1301 immediately, proceed to step 8.
If the AQ1300/AQ1301 that you want to connect to appears in the host list, select from the **Host List**.
Proceed to step 8.

2.1 Connecting over a Network

6. To register the host name to the Host List, click **Get From Host**. The host name assigned to the AQ1300/AQ1301 at the specified IP address will appear in the Host Name box.
7. Click **Add**. The host name is added to the Host List.
8. Check that the AQ1300/AQ1301 is showing the top menu, and click **Connect**.
A connection will be established with the specified AQ1300/AQ1301.

Note

- If you try to connect to an AQ1300/AQ1301 when it is not showing the top menu, an error will occur.
 - If an error occurs (the message button blinks in red), click the message button to display a list of messages. The error will be cleared.
 - When the PC and AQ1300/AQ1301 connect successfully, the AQ1300/AQ1301 enters remote mode.
-

2.2 Connecting Using the USB

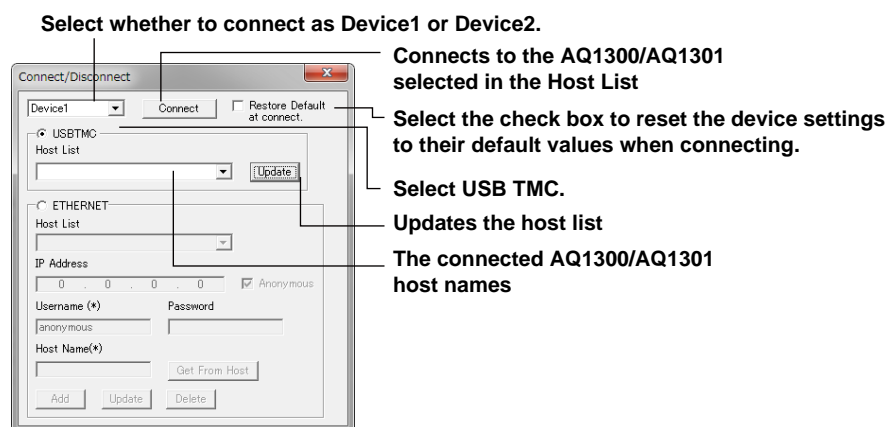
This section explains how to connect the AQ1300/AQ1301 to a PC using a USB.

Configuring the AQ1300/AQ1301

1. In the AQ1300/AQ1301 system settings, set the USB function to communications.
For the procedure, see “Configuring the Language, Beep, and USB Function” in the AQ1300/AQ1301 User’s Manual.
2. Press **MENU** on the panel to display the top menu.
3. Connect the AQ1300/AQ1301 to the PC using a USB cable.

Configuring the Remote Control Software

1. Click Start, **All Programs**, **yokogawa**, **AQ1300CtrlWnd**, and then click **AQ1300CtrlWnd.exe**.
The Control Software starts.
2. On the **Connect** menu, click **Connect**.



3. Of the two measuring instruments that can be connected, select which device, Device1 or Device2, to connect as.
4. Select **USB TMC**.
5. Click **Update**.
The connected AQ1300/AQ1301 host names appear. The host name is set in the AQ1300/AQ1301 network settings.
6. Check that the AQ1300/AQ1301 is showing the top menu, and click **Connect**.
A connection will be established with the specified AQ1300/AQ1301.

Note

- If you try to connect to an AQ1300/AQ1301 when it is not showing the top menu, an error will occur.
- If an error occurs (the message button blinks in red), click the message button to display a list of messages. The error will be cleared.
- When the PC and AQ1300/AQ1301 connect successfully, the AQ1300/AQ1301 enters remote mode.

3.1 Configuring a Traffic Test

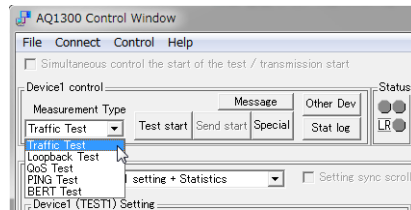
This section explains how to configure a traffic test.
 For details on the settings, see the AQ1300/AQ1301 User's Manual (IM AQ1300-01EN).

When Using an Existing Setup File

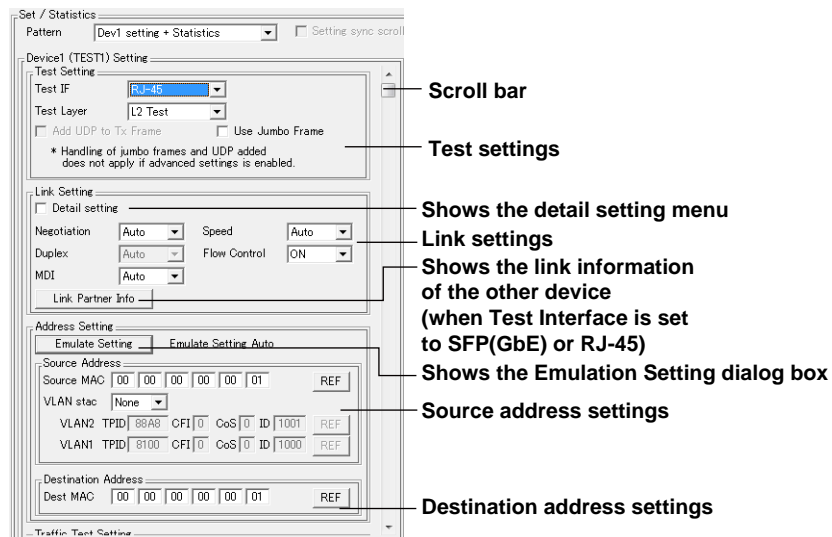
1. On the **File** menu, click **Open Setup File**.
2. Select the setup file that you want to open, and click **Open**.
 The software settings are changed to those in the setup file.

Configuring the Settings on the Software

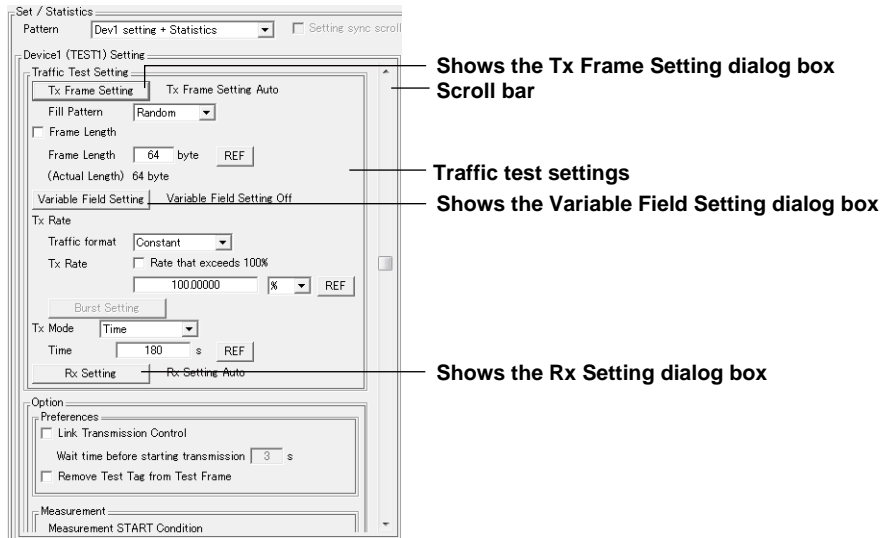
1. Set **Measurement Type** to **Traffic Test**.
 The setting menu changes to show traffic test setup items.



2. Specify the settings.
 To specify the settings manually, click the setting buttons. The corresponding setting dialog boxes will appear.
 Test Setting, Link Setting, Address Setting, and Option are shared among all measurement types.



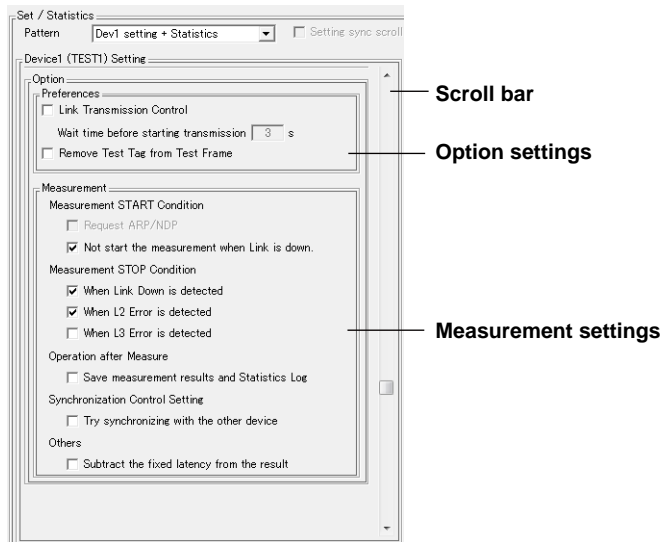
3.1 Configuring a Traffic Test



Shows the Tx Frame Setting dialog box
Scroll bar

Traffic test settings
Shows the Variable Field Setting dialog box

Shows the Rx Setting dialog box



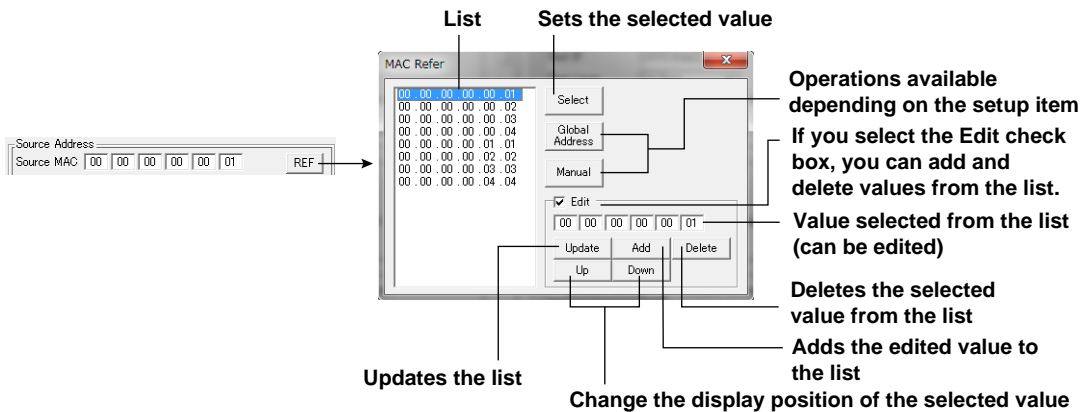
Scroll bar

Option settings

Measurement settings

Specifying Registered Values

Click REF. Value registered previously are listed, and you can select from this list. You can add and delete values from this list.



List Sets the selected value

Operations available depending on the setup item
If you select the Edit check box, you can add and delete values from the list.
Value selected from the list (can be edited)

Updates the list

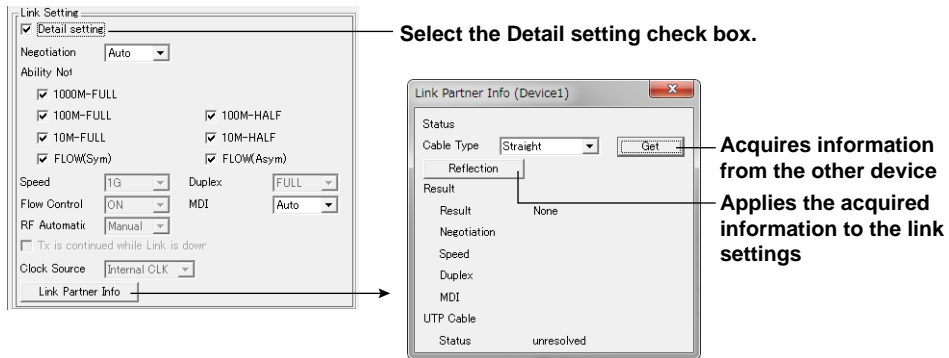
Change the display position of the selected value

Deletes the selected value from the list

Adds the edited value to the list

Detailed Link Settings

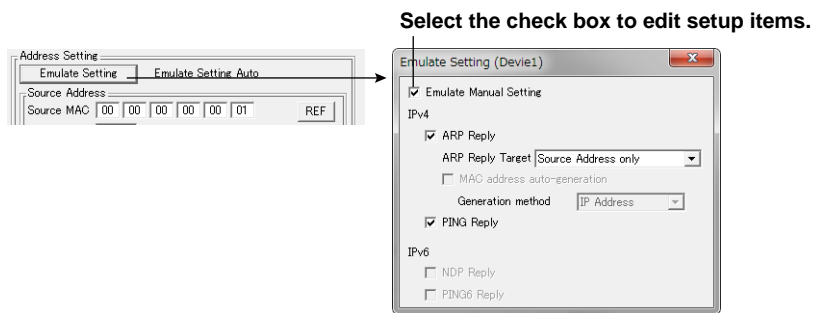
Select the **Detail setting** check box. The detailed setting menu appears.



Emulation Settings

Click **Emulate Setting**. A dialog box for manually setting the emulation appears.

This setting is valid when Test Layer is set to L3-IPv4 Test or L3-IPv6 Test.



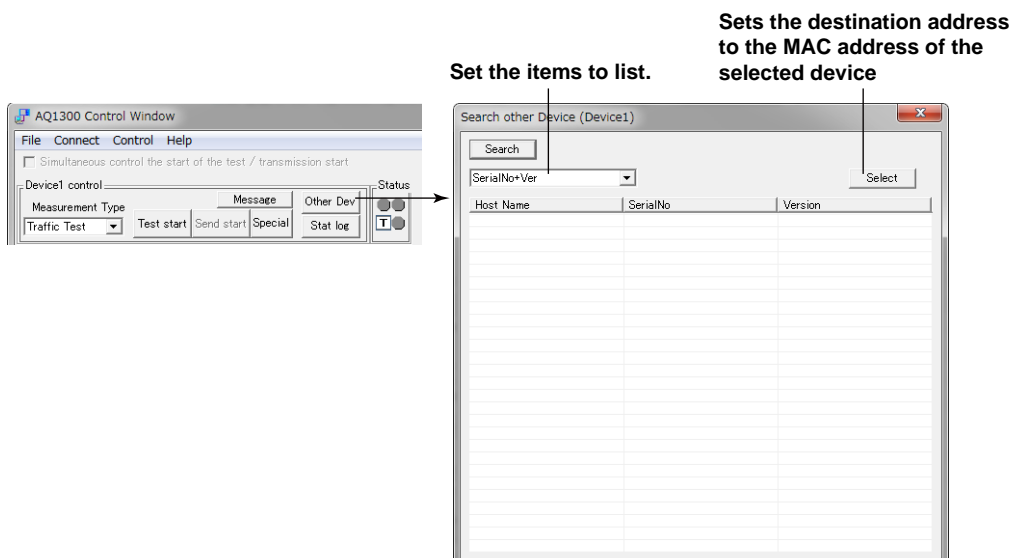
Setting the Destination Address

You can set the destination address from a list containing other devices can be found by searching.

On the control menu, click **Other Dev**.

Click **Search**. From the list that appears, select the device to set as the destination.

Click **Select**. The destination address is set to the MAC address of the selected device.

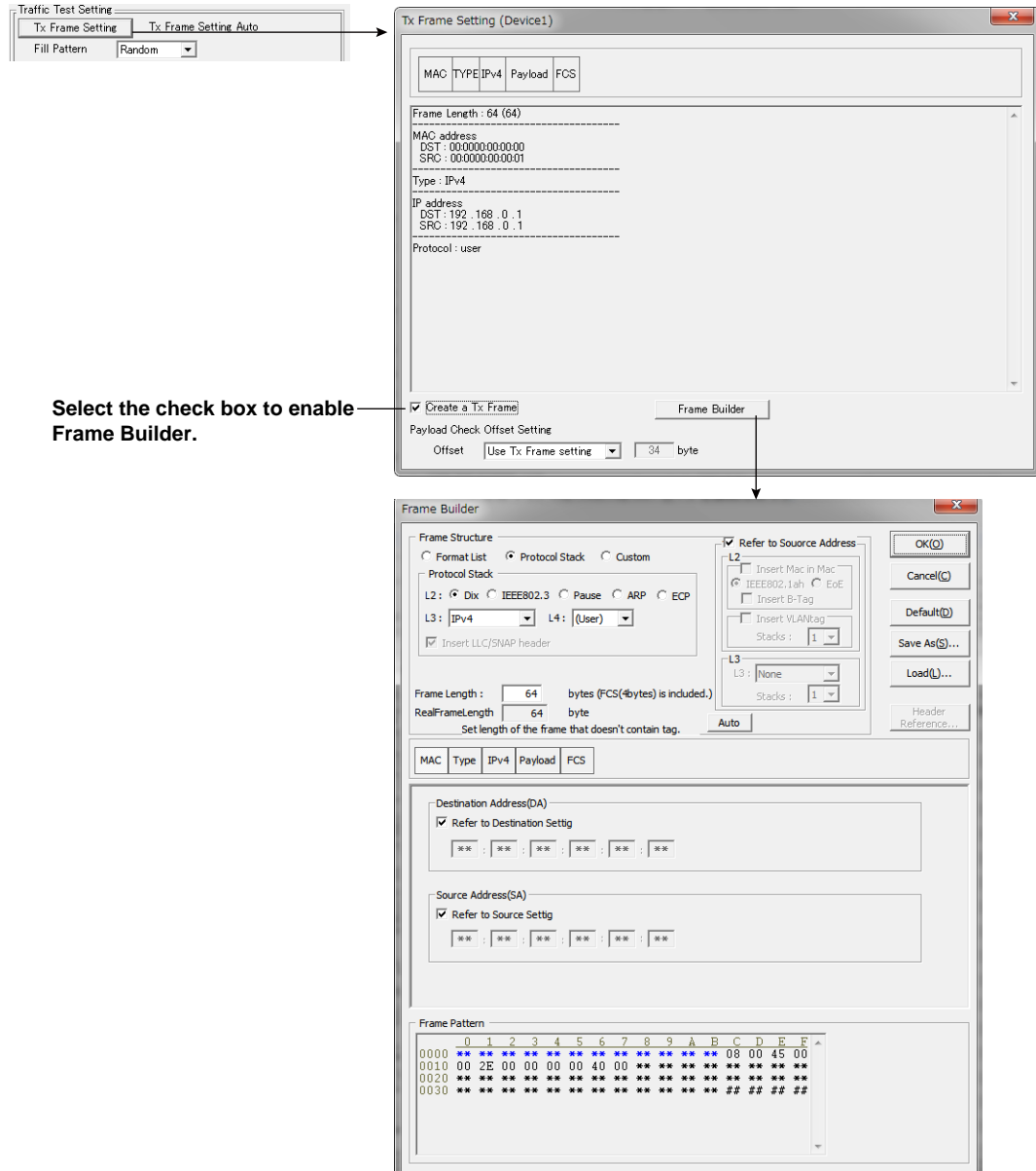


3.1 Configuring a Traffic Test

Tx Frame Setting

Click **Tx Frame Setting**. A dialog box for manually setting the Tx frame appears.

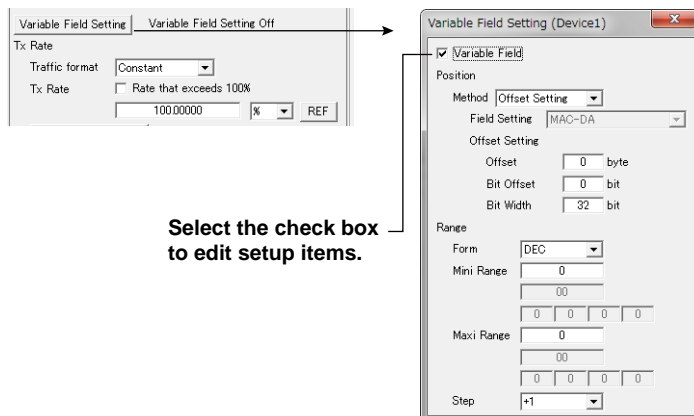
The way to use Frame Builder is the same as with the AQ1300/AQ1301 Setup Software. See “Using Frame Builder.”



Select the check box to enable Frame Builder.

Variable Field Setting

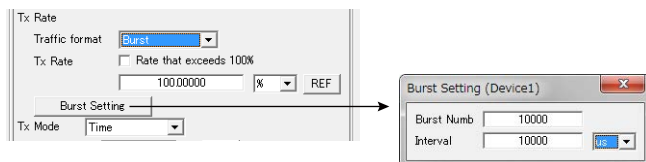
Click **Variable Field Setting**. A dialog box for manually setting the Tx frame appears.



Select the check box to edit setup items.

Burst Setting

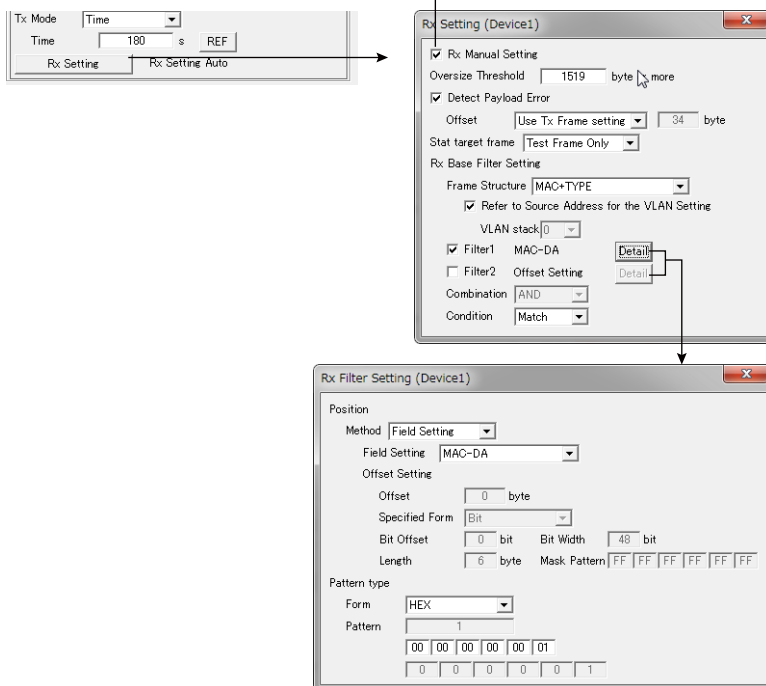
Click **Burst Setting**. A dialog box for manually setting the burst count and interval appears. This setting is valid when the traffic format is set to Burst.



Rx Setting

Click **Rx Setting**. A dialog box for manually setting the reception appears.

Select the check box to edit setup items.



3.2 Configuring a Loopback Test

This section explains how to configure a loopback test.

For details on the settings, see the AQ1300/AQ1301 User's Manual (IM AQ1300-01EN).

When Using an Existing Setup File

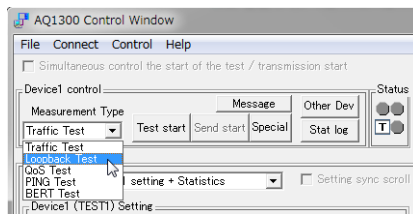
1. On the **File** menu, click **Open Setup File**.
2. Select the setup file that you want to open, and click **Open**.

The software settings are changed to those in the setup file.

Configuring the Settings on the Software

1. Set **Measurement Type** to **Loopback Test**.

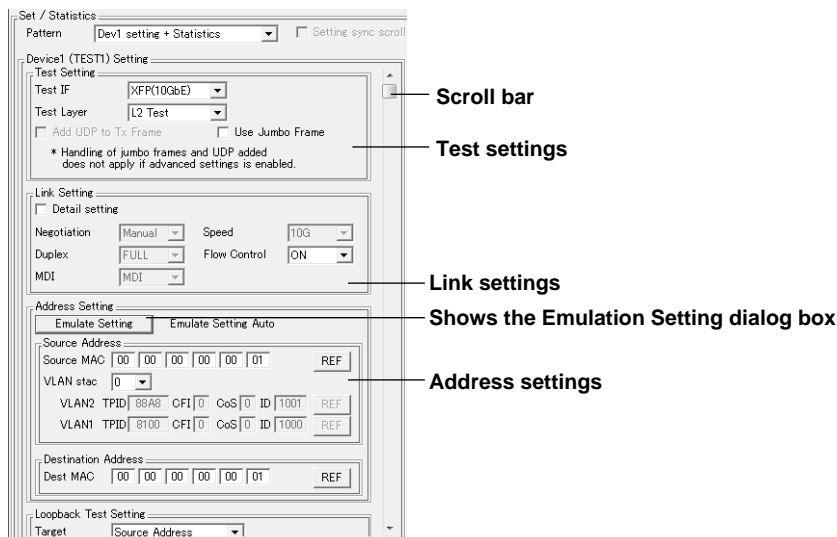
The setting menu changes to show loopback test setup items.

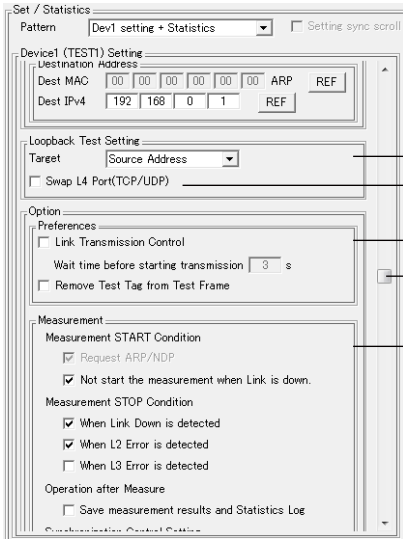


2. Specify the settings.

To specify the settings manually, click the setting buttons. The corresponding setting dialog boxes will appear.

Test Setting, Link Setting, Address Setting, and Option are shared among all measurement types. For the operating procedure, see section 3.1, "Configuring a Traffic Test."





- Loopback test settings
Valid when Test Layer is set to L3-IPv4 Test or L3-IPv6 Test
- Option settings
- Scroll bar
- Measurement settings

3.3 Configuring a QoS Test

This section explains how to configure a QoS test.

For details on the settings, see the AQ1300/AQ1301 User's Manual (IM AQ1300-01EN).

When Using an Existing Setup File

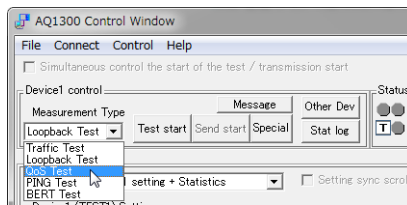
1. On the **File** menu, click **Open Setup File**.
2. Select the setup file that you want to open, and click **Open**.

The software settings are changed to those in the setup file.

Configuring the Settings on the Software

1. Set **Measurement Type** to **QoS Test**.

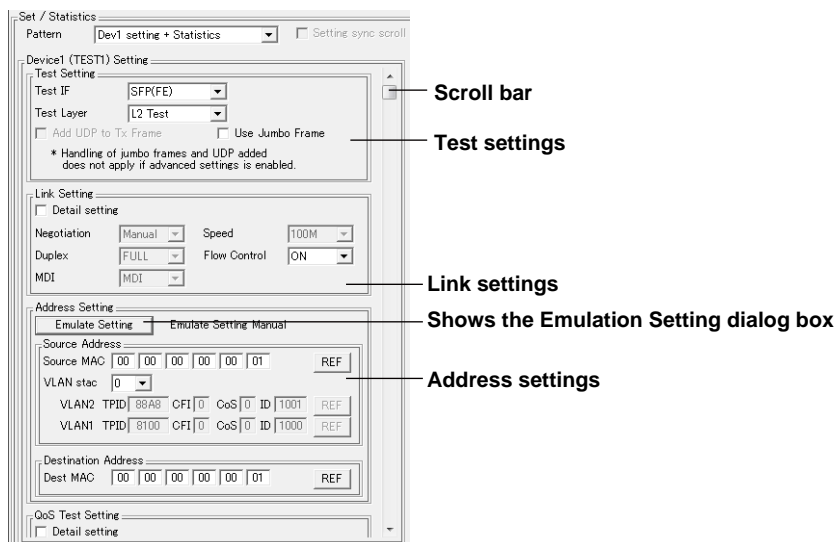
The setting menu changes to show QoS test setup items.

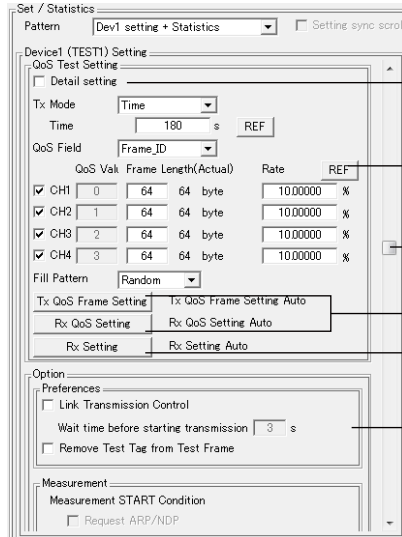


2. Specify the settings.

To specify the settings manually, click the setting buttons. The corresponding setting dialog boxes will appear.

Test Setting, Link Setting, Address Setting, and Option are shared among all measurement types. For the operating procedure, see section 3.1, "Configuring a Traffic Test."





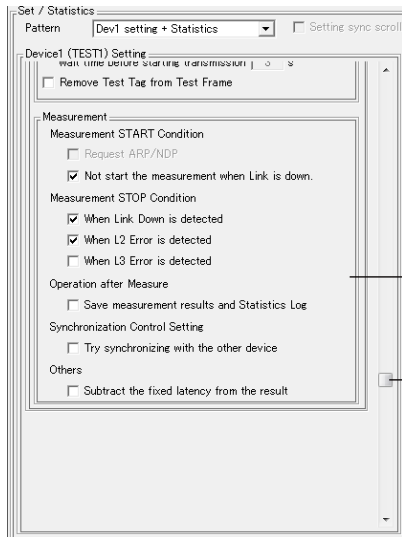
Shows the detail setting dialog box

QoS test settings

Scroll bar

Displays the settings if the Detail setting check box is not selected
Shows the Rx Setting dialog box

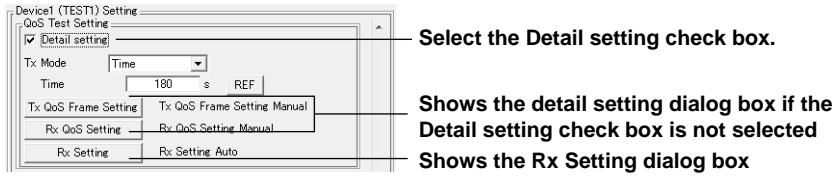
Option settings



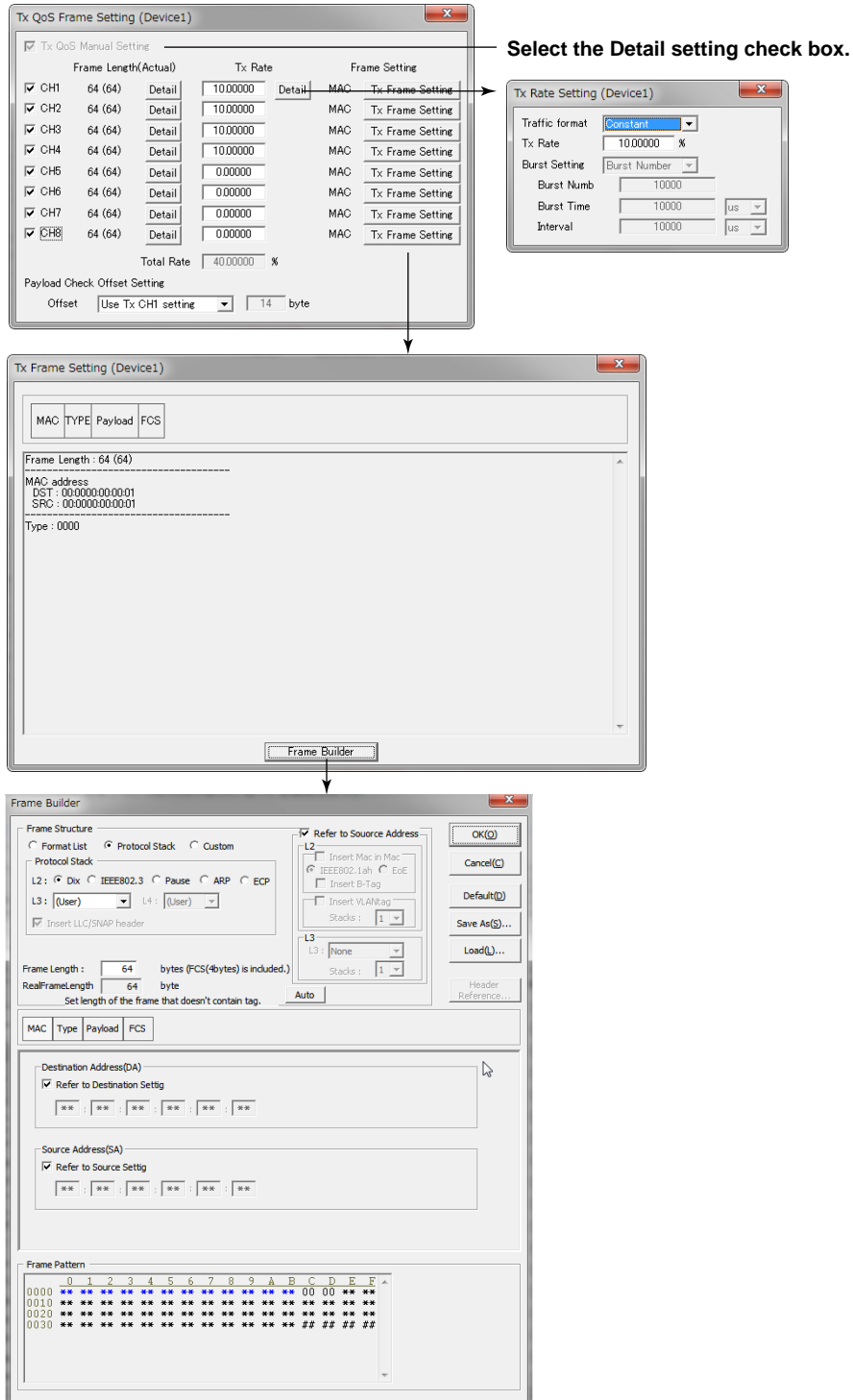
Measurement settings

Scroll bar

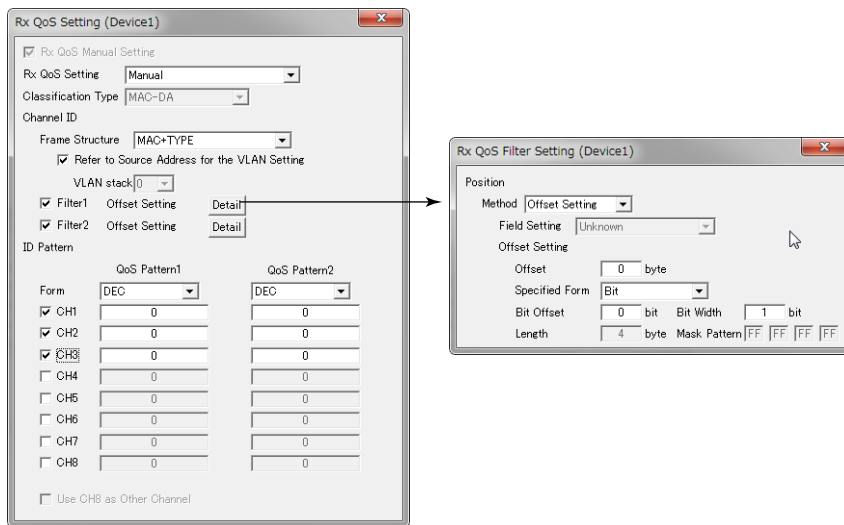
QoS Test Detailed Setting Dialog Box



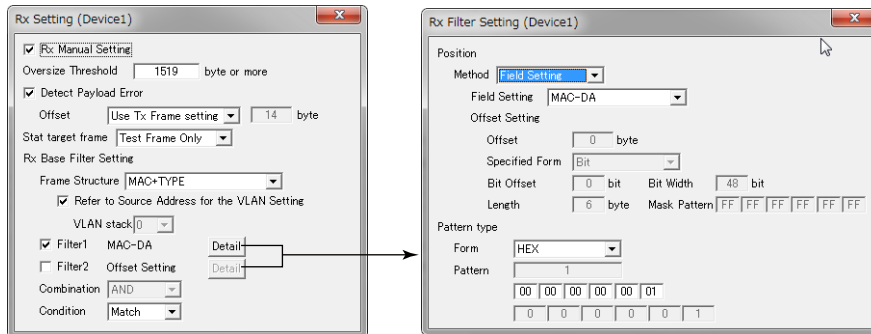
Tx QoS Frame Detailed Settings



Rx QoS Detailed Settings



Rx Detailed Settings



3.4 Configuring a PING Test

This section explains how to configure a PING test.

For details on the settings, see the AQ1300/AQ1301 User's Manual (IM AQ1300-01EN).

When Using an Existing Setup File

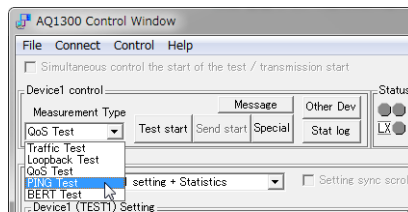
1. On the **File** menu, click **Open Setup File**.
2. Select the setup file that you want to open, and click **Open**.

The software settings are changed to those in the setup file.

Configuring the Settings on the Software

1. Set **Measurement Type** to **PING Test**.

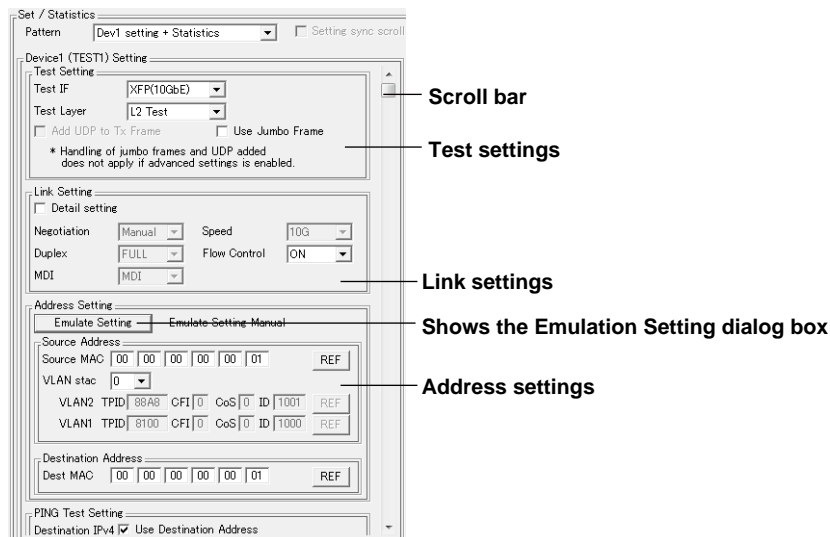
The setting menu changes to show PING test setup items.

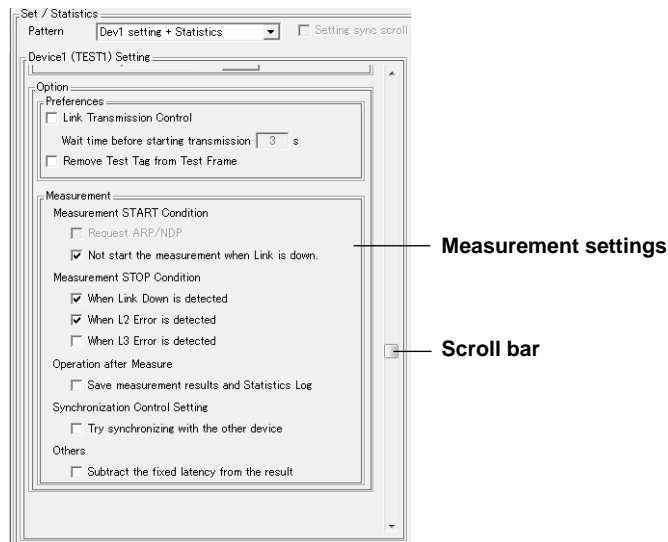
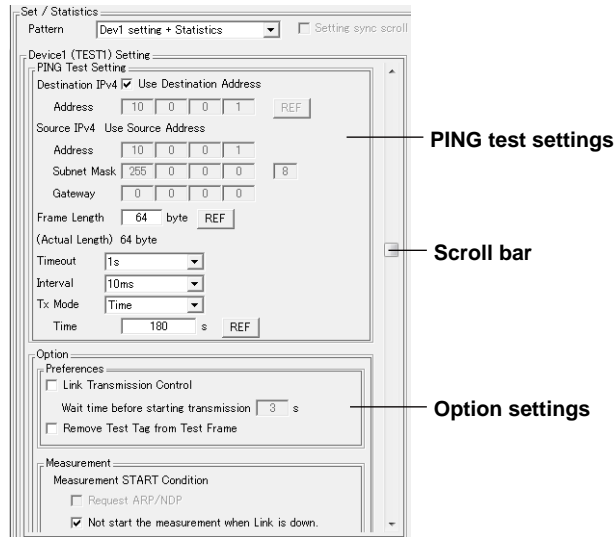


2. Specify the settings.

To specify the settings manually, click the setting buttons. The corresponding setting dialog boxes will appear.

Test Setting, Link Setting, Address Setting, and Option are shared among all measurement types. For the operating procedure, see section 3.1, "Configuring a Traffic Test."





3.5 Configuring a BERT Test

This section explains how to configure a BERT test.

For details on the settings, see the AQ1300/AQ1301 User's Manual (IM AQ1300-01EN).

When Using an Existing Setup File

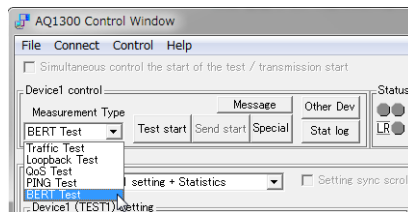
1. On the **File** menu, click **Open Setup File**.
2. Select the setup file that you want to open, and click **Open**.

The software settings are changed to those in the setup file.

Configuring the Settings on the Software

1. Set **Measurement Type** to **BERT Test**.

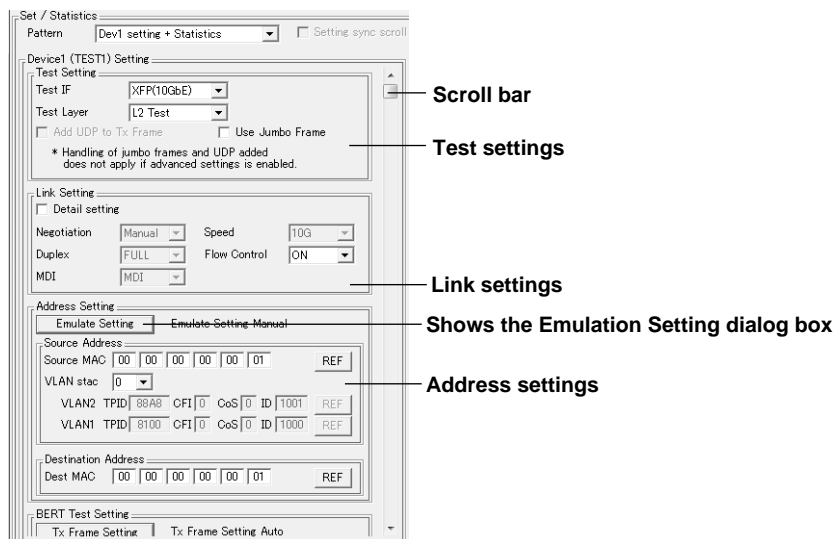
The setting menu changes to show BERT test setup items.

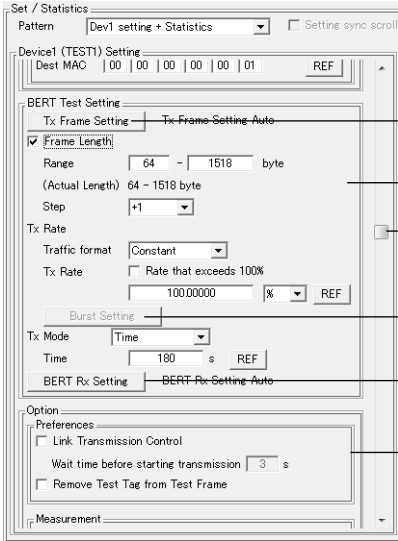


2. Specify the settings.

To specify the settings manually, click the setting buttons. The corresponding setting dialog boxes will appear.

Test Setting, Link Setting, Address Setting, and Option are shared among all measurement types. For the operating procedure, see section 3.1, "Configuring a Traffic Test."





Shows the Tx Frame Setting dialog box

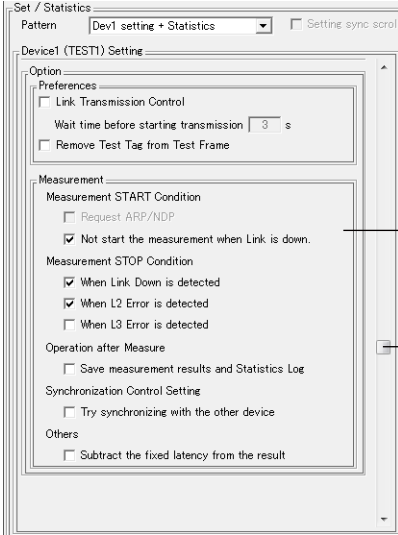
BERT test settings

Scroll bar

Shows the Burst Setting dialog box

Shows the BERT Rx Setting dialog box

Option settings

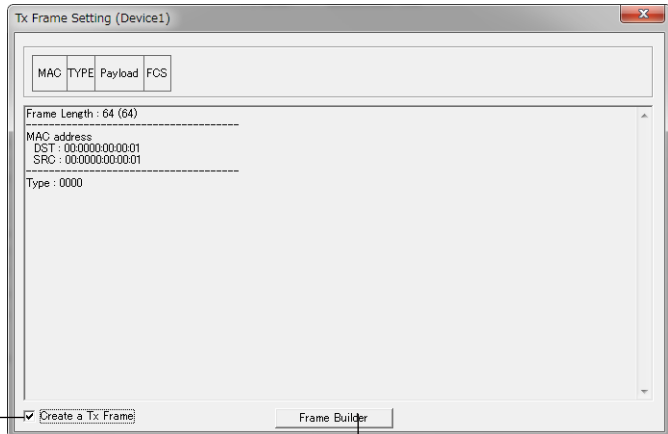
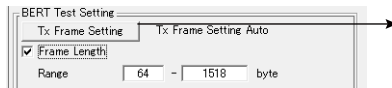


Measurement settings

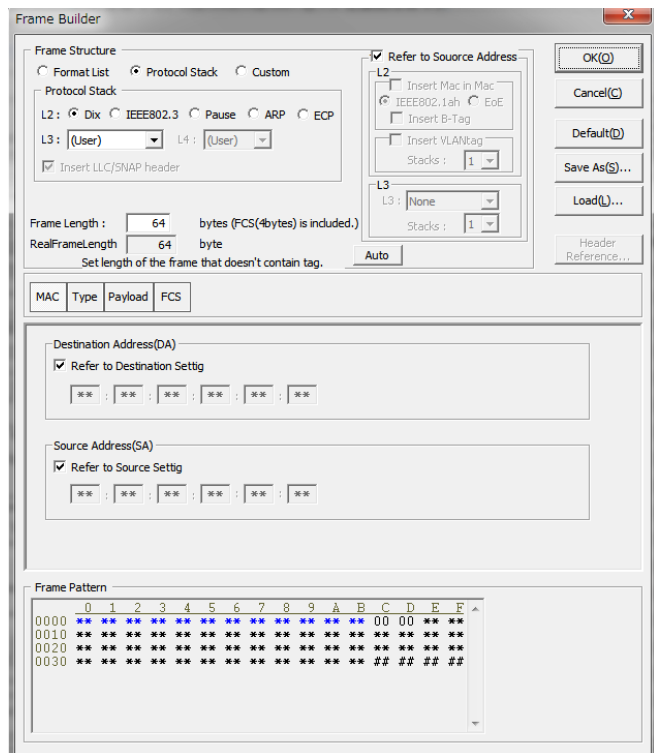
Scroll bar

3.5 Configuring a BERT Test

Tx Frame Setting



Select the check box to enable Frame Builder.



Burst Setting

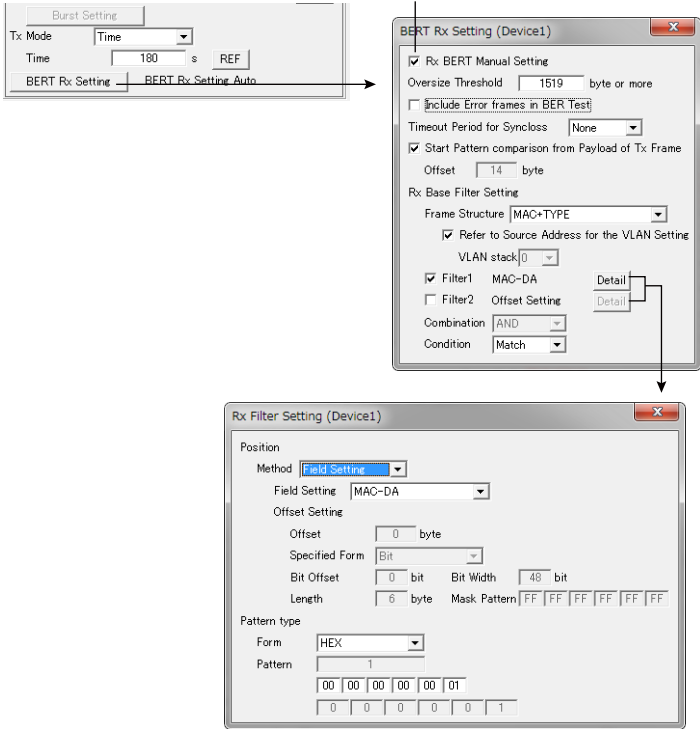
Click **Burst Setting**. A dialog box for manually setting the burst count and interval appears. This setting is valid when the traffic format is set to Burst.



Rx Setting

Click **BERT Rx Setting**. A dialog box for manually setting the BERT reception appears.

Select the check box to edit setup items.

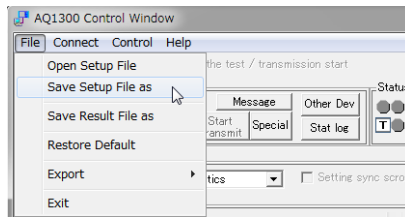


3.6 Saving Setup Data

This section explains how to save the settings that you have specified up to this point to a file. There are two types of files that you can save to: a file that can be loaded by this software and a file that can be loaded by the AQ1300/AQ1301 and setup software.

Saving to a File That Can Be Loaded by This Software

1. On the **File** menu, click **Save Setup File as**.

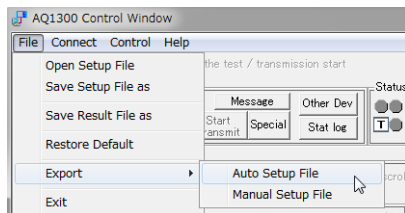


2. Set the save destination and file name, and then click **Save**.

The file name extension is .cwsd.

Saving to a File That Can Be Loaded by the AQ1300/AQ1301 and Setup Software

1. On the **File** menu, point to **Export**, and then click **Auto Setup File** or **Manual Setup File**.



2. Set the save destination and file name, and then click **Save**.

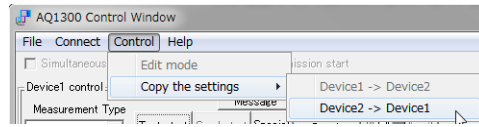
The file name extension is .sd.

This file can be loaded into the AQ1300/AQ1301 or setup software as a setup file for auto tests and manual tests.

3.7 Copying Settings

This section explains how to copy the settings of one AQ1300/AQ1301 to the other AQ1300/AQ1301 when two AQ1300/AQ1301s are connected.

1. On the **Control** menu, click **Copy the settings**.

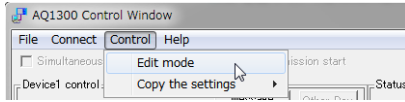


2. Click either **Device1 -> Device2** or **Device2 -> Device1**.
The settings are copied to the specified measuring instrument.

3.8 Creating Setup Data without Connecting to an AQ1300/AQ1301

This section explains how to create setup data without connecting to an AQ1300/AQ1301 and saving the data to a file.

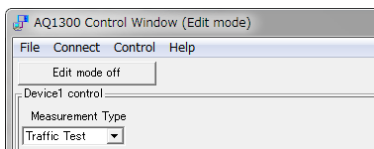
1. On the **Control** menu, click **Edit mode**.



2. A dialog box asking whether you want to initialize the Device1 and Device2 settings appears one at a time.

For each device, click **Yes** to initialize or **No** otherwise.

An Edit mode off button appears below the menu bar on the left.

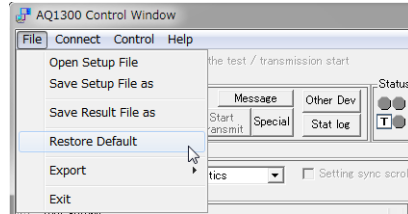


3. Set the items according to the procedures explained in this chapter (see sections 3.1 to 3.5).
4. Save the setup data according to the procedure in section 3.6.
5. To clear Edit mode, click **Edit mode** on the Control menu, or click **Edit mode off**.
6. A dialog box asking whether you want to save the settings appears.
To save click **Yes**; otherwise click **No**. To not clear Edit mode, click **Cancel**.

3.9 Initializing Settings

This section explains how to initialize the settings.

1. On the File menu, click **Restore Default**.



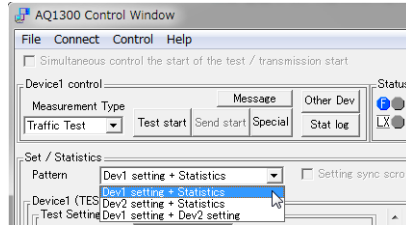
2. A dialog box asking whether you want to initialize the Device1 and Device2 settings appears one at a time.

For each device, click **Yes** to initialize or **No** otherwise.

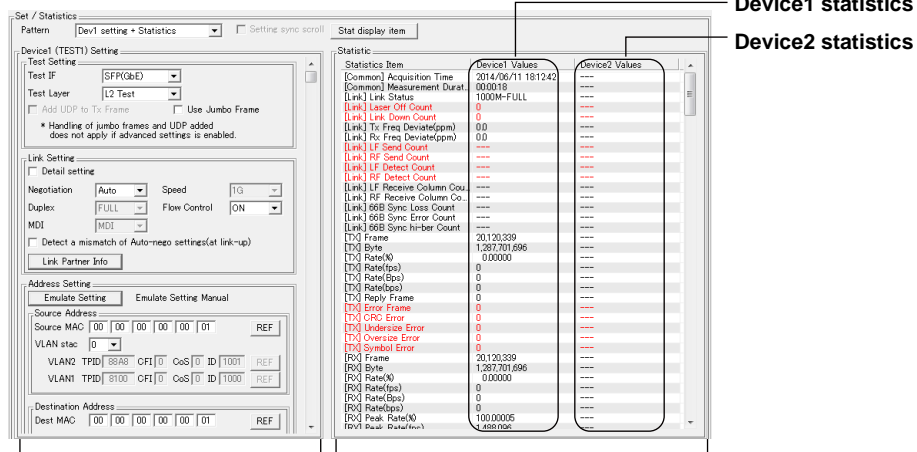
3.10 Configuring the Window

This section explains how to show different display combinations (patterns) of setting menu and list of statistics.

1. Set Pattern to **Dev1 setting + Statistics**, **Dev2 setting + Statistics**, or **Dev1 setting + Dev2 setting**.

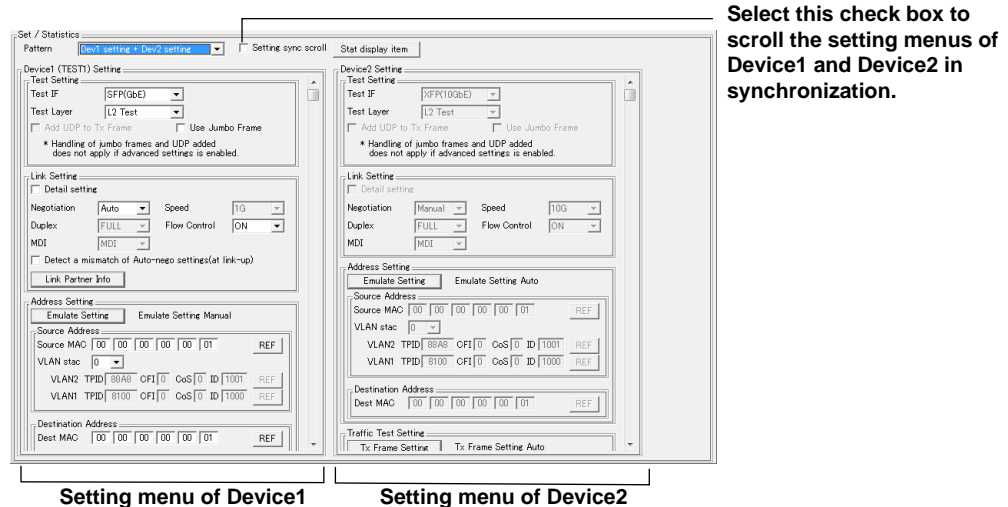


Device1 Settings + Statistics or Device2 Settings + Statistics



Setting menu of Device1 or Device2 A list of statistics

Dev1 Settings + Dev2 Settings

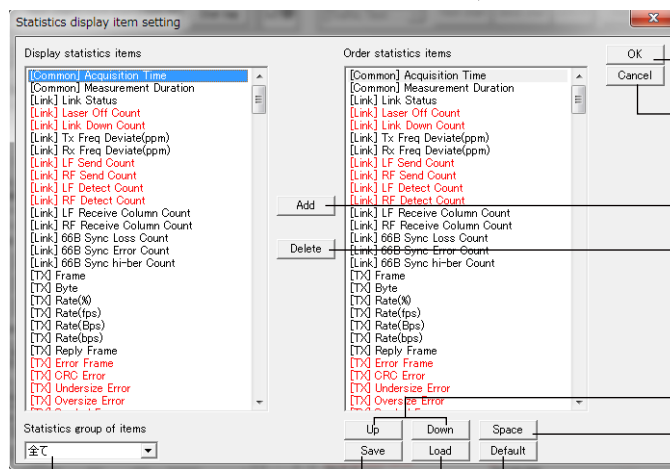
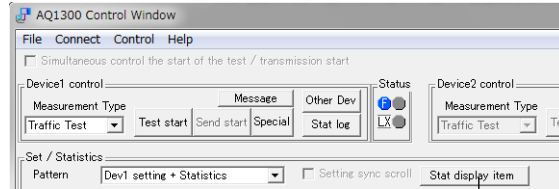


Setting menu of Device1 Setting menu of Device2

3.11 Setting the Statistics to Be Displayed

This section explains how to set the items to be displayed in the list of statistics.

1. Click **Stat display item**.



Applies the settings and closes the dialog box

Discards the settings and closes the dialog box

Adds statistic items to the display

Deletes statistic items from the display

Change the display position

Inserts a line of space

Select the category to display in the “Display statistics items” column.

Resets to default
Load a file.
Save to a file.

To load a list that has saved previously, click **Load**.

Adding Items

- From the items listed in the “Display statistics items” column, select the items that you want to add.
- Click **Add**. The selected items are added to the end of the “Order statistics items” column.

Deleting Items

- From the items listed in the “Order statistics items” column, select the items that you want to delete.
- Click **Delete**. The selected items are deleted from the “Order statistics items” column.

3.11 Setting the Statistics to Be Displayed

Changing the Display Positions

2. From the items listed in the “Order statistics items” column, select the item that you want to change the display position of.
3. Click **Up** or **Down** to change its display position.

Inserting a Space

2. Select the item you want to insert a space.
3. Click **Space**. A space is added above the selected item.

Saving the Display List Data

4. Click **Save**.
5. Set the save destination and file name, and then click **OK**.
The file name extension is .ris.

Applying the Settings

6. Click **OK**. The settings are applied, and the dialog box closes.
To cancel the settings, click **Cancel**.

Note

When you save test results to a file, the data of the display items specified here is saved.

4.1 Executing a Test

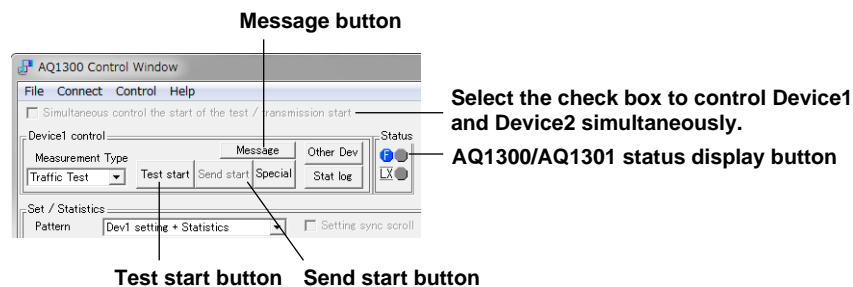
This section explains how to execute the test that you have configured.

Executing a Test

1. Click **Test start**.

The Test start button changes to a Test stop button, and the test is executed.

If the option setting has been specified so that the start of the test is synchronized to the start of transmission, transmission also starts. If this is the case, you do not have to perform step 2.



Note

If the settings are inconsistent, an error occurs, and the Message button blinks in red. At the same time, the Send start button is disabled.

If you click the Message button to display a list of messages, the error is cleared.

Transmitting

2. Click **Send start**.

The Send start button changes to a Send stop button, and the signal appropriate for the test is transmitted.

Stopping the Test

1. Click **Send stop**.

The Send stop button changes to a Send start button, and the signal transmission stops.

2. Click **Test stop**.

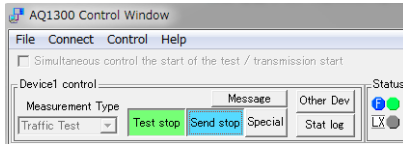
The Test stop button changes to a Test start button, and the test stops.

If you do not stop the transmission and click Test stop, the transmission will also stop automatically.

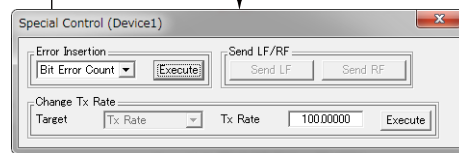
4.2 Inserting Errors, Controlling L1, and Changing the Tx Rate

This section explains how to insert errors, send LF and RF for L1 control, and change the Tx rate.

1. While the test is running and transmission is in progress, click **Special**.
2. Insert errors, send LF or RF, and change the Tx rate as you like.



Error insertion
Available when the
measurement type is
Traffic, QoS, or BERT

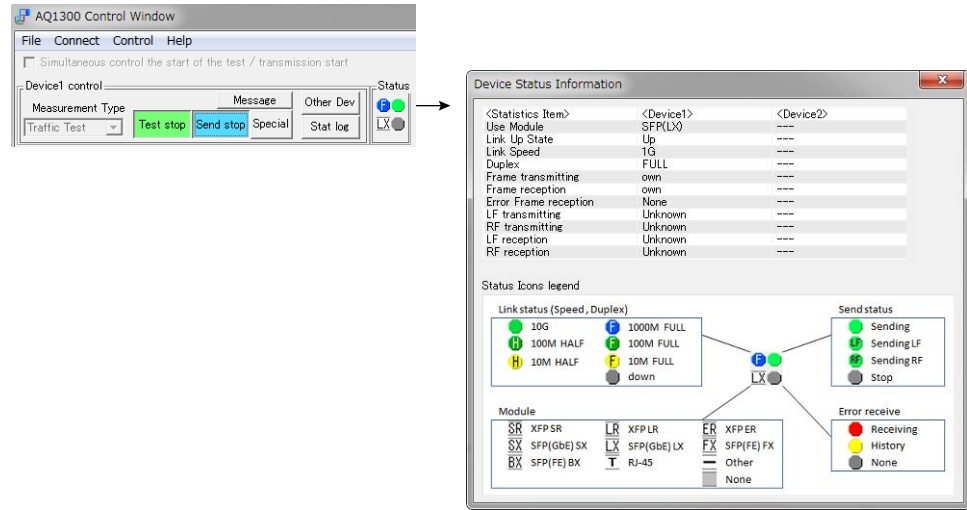


LF/RF transmission
Available when the test
interface is XFP(10GbE)

Tx rate change
Available when the measurement type is Traffic, QoS, or BERT
The target channel can be specified for QoS.

4.3 Displaying the AQ1300/AQ1301 Status

1. Click **Status**.

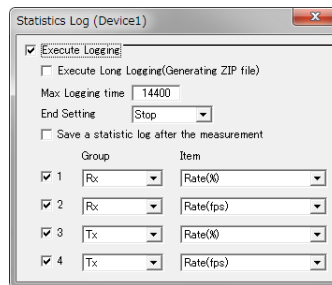
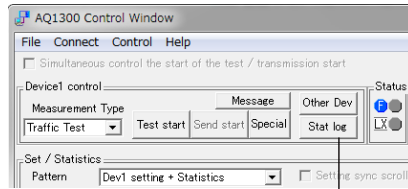


You can view the link status, send status, module types, and error status.

4.4 Capturing a Statistical Log

This section explains how to capture a statistical log.

1. While the test is stopped, click **Stat log**.



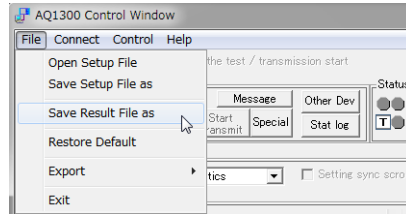
Select the check box, and set the items.

2. Select the **Execute Logging** check box, and set the various setup items.
3. When you start a test, a statistical log of the specified items will be recorded.

4.5 Saving Test Data

This section explains how to save the test results to files.

1. On the **File** menu, click **Save Result File as**.



2. Set the save destination and file name, and then click **Save**.

The data is saved in CSV format (.csv).

The data of the items that have been selected to be displayed in the statistical item display settings is saved.